

House Type 12H

🏠 4 🛏️ 2.5 🚗 2



LE-WINDSOR BY NATURE WELCOMES YOU

Indulge yourself in luxury living within Norwes Business Park, with convenience access to amenities like: Castle Hill Country Golf Club, Norwest Business Park, shopping centre and upcoming City Railway link. Plus Castle Towers is upgrading to the 2nd biggest shopping centre in Australia.

Delivering to you by an experienced team of Rawson Homes, Harman & Silverstone.

Property Features:

- Fixed price with split contracts – Save \$\$ on Stamp duty
- Modern individual design with high ceiling on ground floor
- Contemporary three phases design facade rendering
- Cesar stone kitchen with glass splash backs
- 900mm gas cook top & electric oven + dishwasher
- LED down lights throughout living areas, Oyster to bedrooms
- 2 Zoned Daikin 14kw Reverse Cycle Ducted Air Conditioning System
- Grassed courtyard & alfresco area to entertain
- Automatic garage doors with internal access
- Fully fenced with landscaped gardens
- Choice of Tile or Laminate Timber flooring to living areas

Other Features: NBN ready, Three Phases Main power, Double power point to bedrooms and garage, 2x Data, telephone & TV points, Caroma Bathroom accessories, TV antenna, Taubmans Endur 3 coats paint.

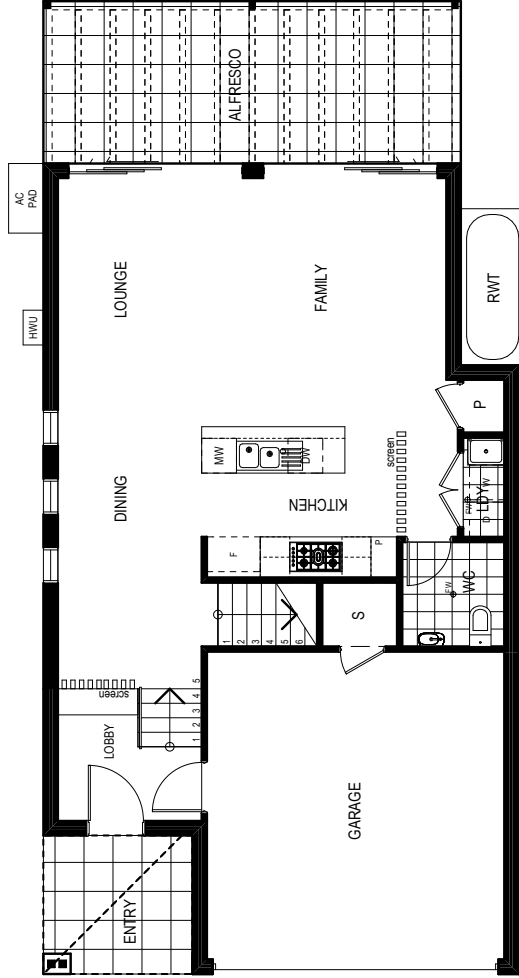
DISCLAIMER: 1. Please note the plans are produced prior to construction. 2. The information in the plan is indicative only. 3. Changes may be made during construction with dimensions and specifications in accordance with the provisions of the contract for sale. 4. The furniture, furnishing and/or motor vehicles shown are not included with any sale. Purchasers should refer to the list of inclusions within the contract for sale. 5. All areas shown on the plan are indicative. All areas are subject to final survey. 6. The layout plan is not drawn to scale. 7. Render is for illustrative purposes only. 8. Purchasers must rely on their own enquiries. (April 2015)



**RAWSON
HOMES**
— EST 1978 —



| FLOOR AREAS | |
|--------------|----------------------------|
| GROUND FLOOR | 74.02M ² |
| FIRST FLOOR | 100.52M ² |
| GARAGE | 31.00M ² |
| PORCH | 6.14M ² |
| ALFRESCO | 20.16M ² |
| BALCONY | 4.49M ² |
| TOTAL | 236.33M² |



Ground Floor Plan



First Floor Plan